

Creating/Editing a Lesson

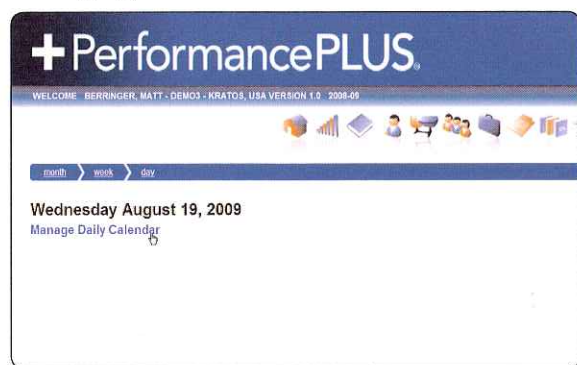


1. Click the **Lesson Planner** icon in the navigation bar.

QUICK NOTE

In order to use the lesson planning tool, you must have at least one unit on your landscape map.

Managing Activities



1. The Day View screen appears.
2. To add or edit activities, click the **Manage Daily Calendar** link.

Choosing Lesson Date



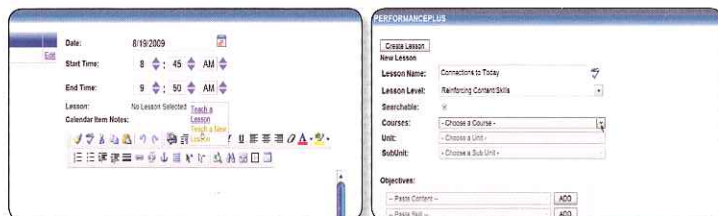
1. The Month View screen appears.
2. Click the **Pencil** icon on the desired day to access the day view.

Adding an Activity or Existing Lesson



1. The Manage Daily Calendar screen appears.
2. To enter a new activity or existing lesson, enter the desired date, time range, and notes.
3. Click the **Edit** link in the Daily Calendar table to edit an existing activity or lesson.
4. If the activity is an existing lesson, hover over the **No Lessons Selected** text to attach an existing lesson.
5. Click the **Add Calendar Item** button to save the entry.

Adding a New Lesson

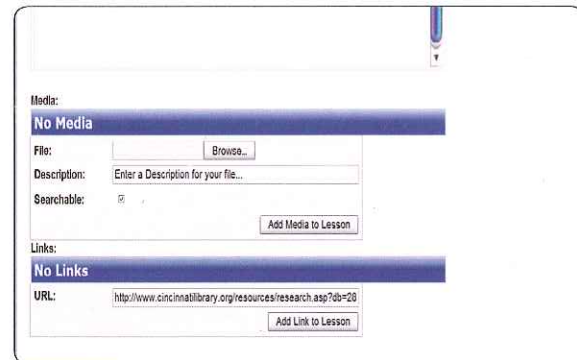


1. From the Manage Activities screen, hover over the **No Lessons Selected** text and click the **Teach a New Lesson** link.
2. Enter the lesson details using the drop-down boxes* and text boxes provided.
3. Click the **Create Lesson** button.
4. Click the **Teach this Lesson** button.
5. Enter the desired date, time, and notes for this lesson.
6. Click the **Add Calendar Item** button.

QUICK NOTE

*If objectives have been entered on the landscape map, use the drop-down box to select them.

Adding Media & Links



1. After creating a new lesson or clicking the edit button on an existing lesson, options to add media appear at the bottom of the Lesson Detail screen.
Media: Click the **Browse** button to search for files. Click the **Add Media to Lesson** button.
Links: Enter the desired link and click the **Add link to Lesson** button.
2. Click the **Update Lesson** button.
3. Click the **Edit Activity** button below the Calendar Item Notes text box to save the changes.

Lesson Plan Report — With this report, a user can view the details of the information included in a lesson.

To view the Lesson Plan Report:

1. Click the **Reports** icon.
2. Click the **Lesson Plans** link.
3. Enter the desired report type.
4. Enter the desired dates.
5. Select the elements to show.
6. Click the **View Report** button.



+ PerformancePLUS.

Lesson Plan Report

Teacher: **Mrs. Smith**
Course: **FL Literature**

Start Date: 8/18/2009
End Date: 8/19/2009

Lesson Name **Date**

Connections to Today 8/19/2009 8:00AM - 9:00AM

Level:
Reinforcing Concept/Skills

Activities:
Discuss how contemporary writers and cartoonists have followed Swift's examples of creating satirical pieces in order to suggest reform in society. Review the idea of "Shrek" and political cartoons.

See assessment (Original Satire) for assignment

Aligned Skills
- analyze and compare a variety of traditional, classical, and contemporary literary works, and identify the literary elements of each
- produce an original piece of satire

Aligned Assessments
Original Satire

Directions:
Produce an original piece of satire for today's society. The piece will satirize a political, social, or economic event.

Product:
Options include:
-short writing
-original cartoon

Other options will be accepted pending on teachers approval

Aligned Standards
LA.910.2.1.2 ~ analyze and compare a variety of traditional, classical, and contemporary literary works, and identify the literary elements of each (e.g., setting, plot, characterization, conflict);

LA.910.6.3.2 ~ ethically use mass media and digital technology assignments and presentations, citing sources according to the standardized citation styles